

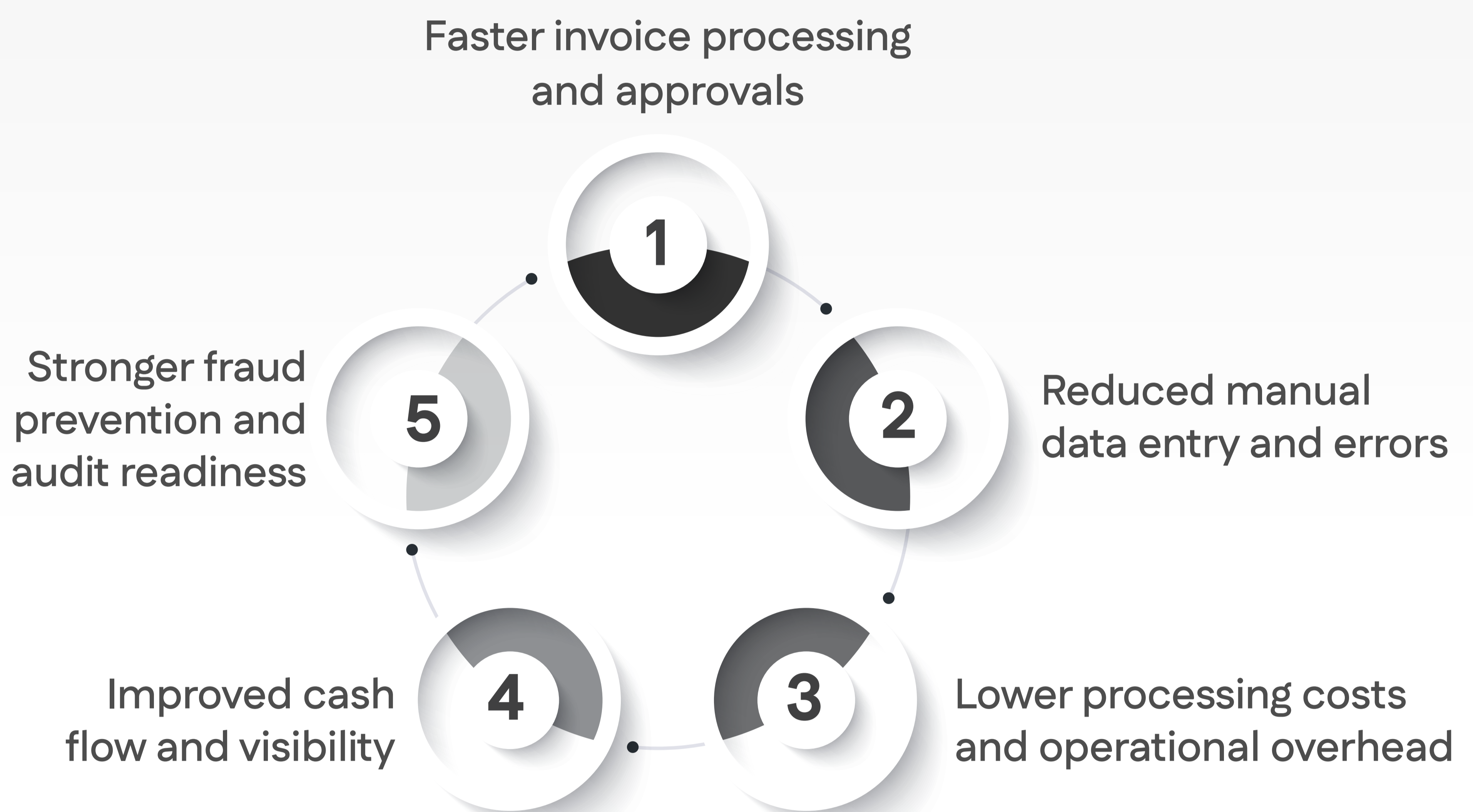
# AP Automation Transforming Accounts Payable with AI and Automation



## Why Businesses Are Moving to AP Automation

AP automation not only simplifies invoice processing but also brings structure, control, and intelligence to the entire accounts payable function. By replacing manual tasks with AI-driven workflows, organizations can eliminate bottlenecks and improve processing efficiency. It enables finance teams to focus on high-value activities instead of repetitive tasks. At the same time, real-time visibility and data accuracy help businesses make faster and more informed financial decisions.

## Key Benefits of AP Automation

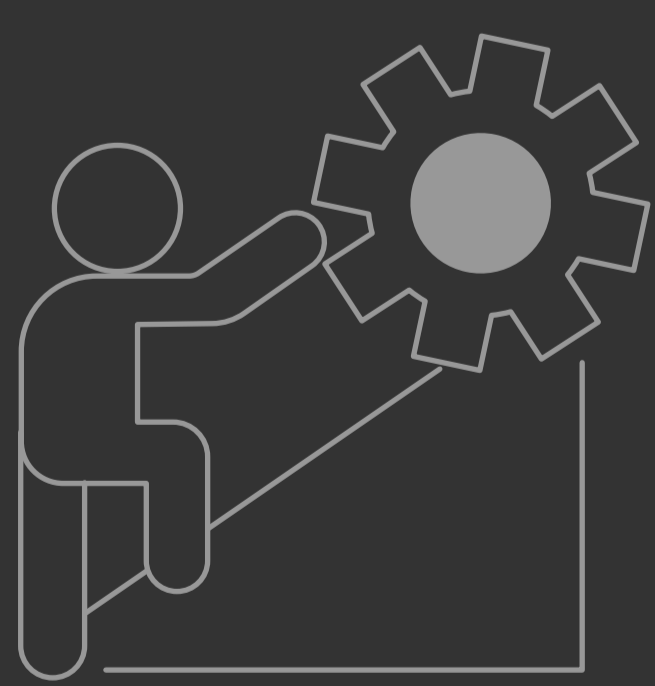


AP Automation Capabilities	AP Automation Features
<ul style="list-style-type: none"> <li>» Invoice capture from email, PDF, &amp; portals</li> <li>» AI-based data extraction and validation</li> <li>» Automated approval workflows</li> <li>» 2-way and 3-way PO matching</li> <li>» Payment processing and ERP integration</li> </ul>	<ul style="list-style-type: none"> <li>» Real-time dashboards and tracking</li> <li>» Role-based access and audit trails</li> <li>» Duplicate invoice and fraud detection</li> <li>» Vendor portals for self-service</li> <li>» Automated alerts and notifications</li> </ul>

## Best Practices for AP Automation

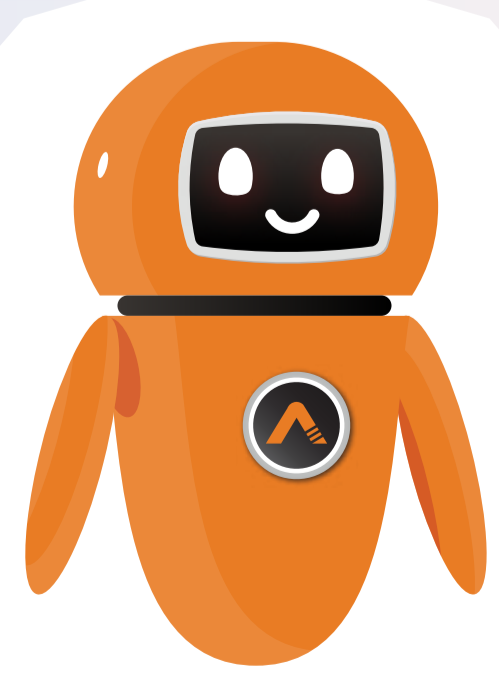


## Common Challenges Solved



- » Manual data entry and processing delays
- » Lack of visibility into invoice status
- » High error rates and duplicate payments
- » Fraud risks and weak controls
- » Scalability issues with growing invoice volumes

## How AutomationEdge Enables AP Automation



- » AI-powered data extraction using Intelligent Document Processing (IDP)
- » Workflow orchestration for invoice approvals and exception handling
- » Seamless integration with ERP, banking, and finance systems
- » RPA bots to automate invoice processing, validation, and payments
- » Real-time dashboards, monitoring, and audit trails for complete visibility
- » Scalable platform with 750+ connectors to automate end-to-end AP workflows