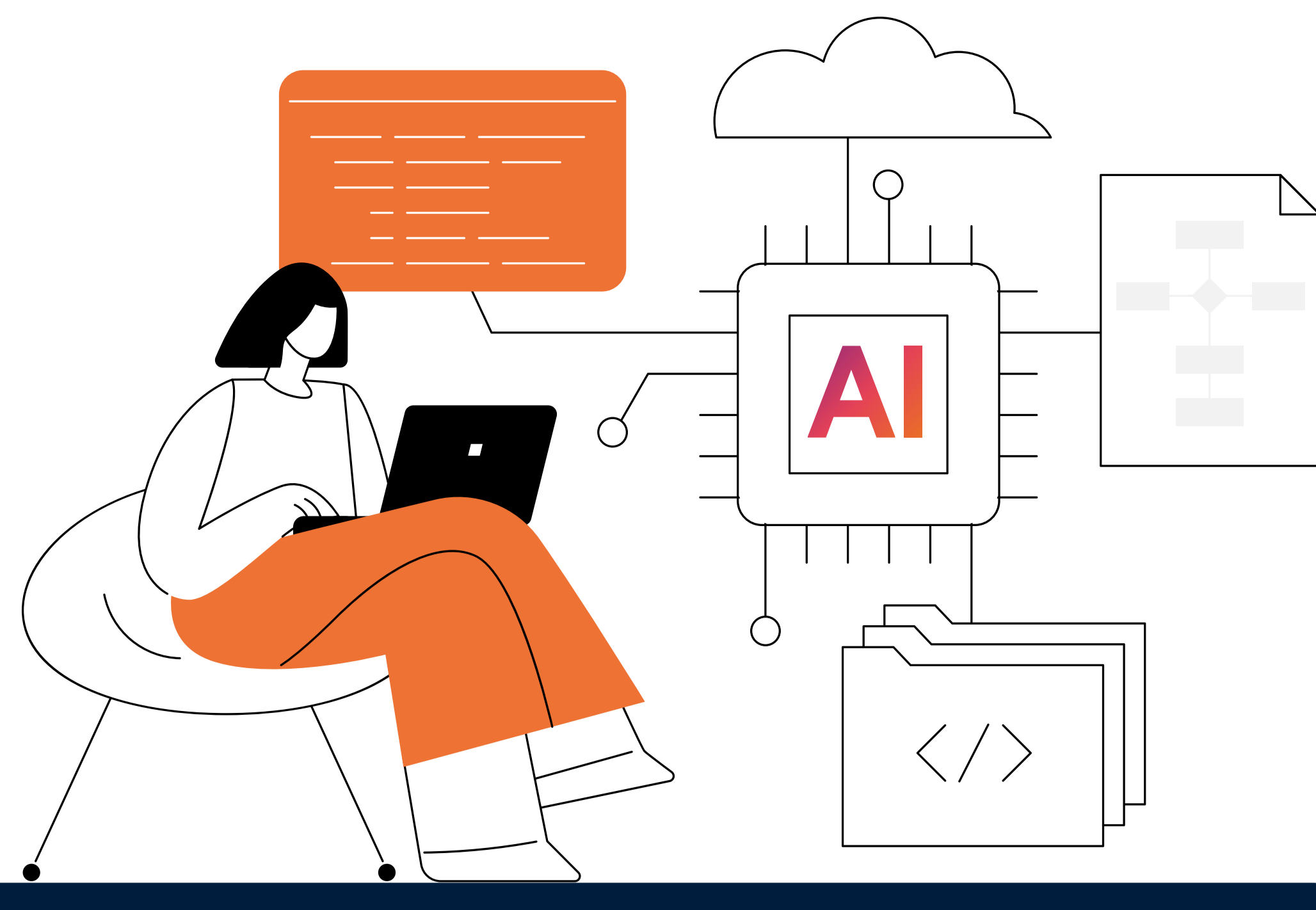


# How Agentic AI Works Architecture of Autonomous Enterprise Agents

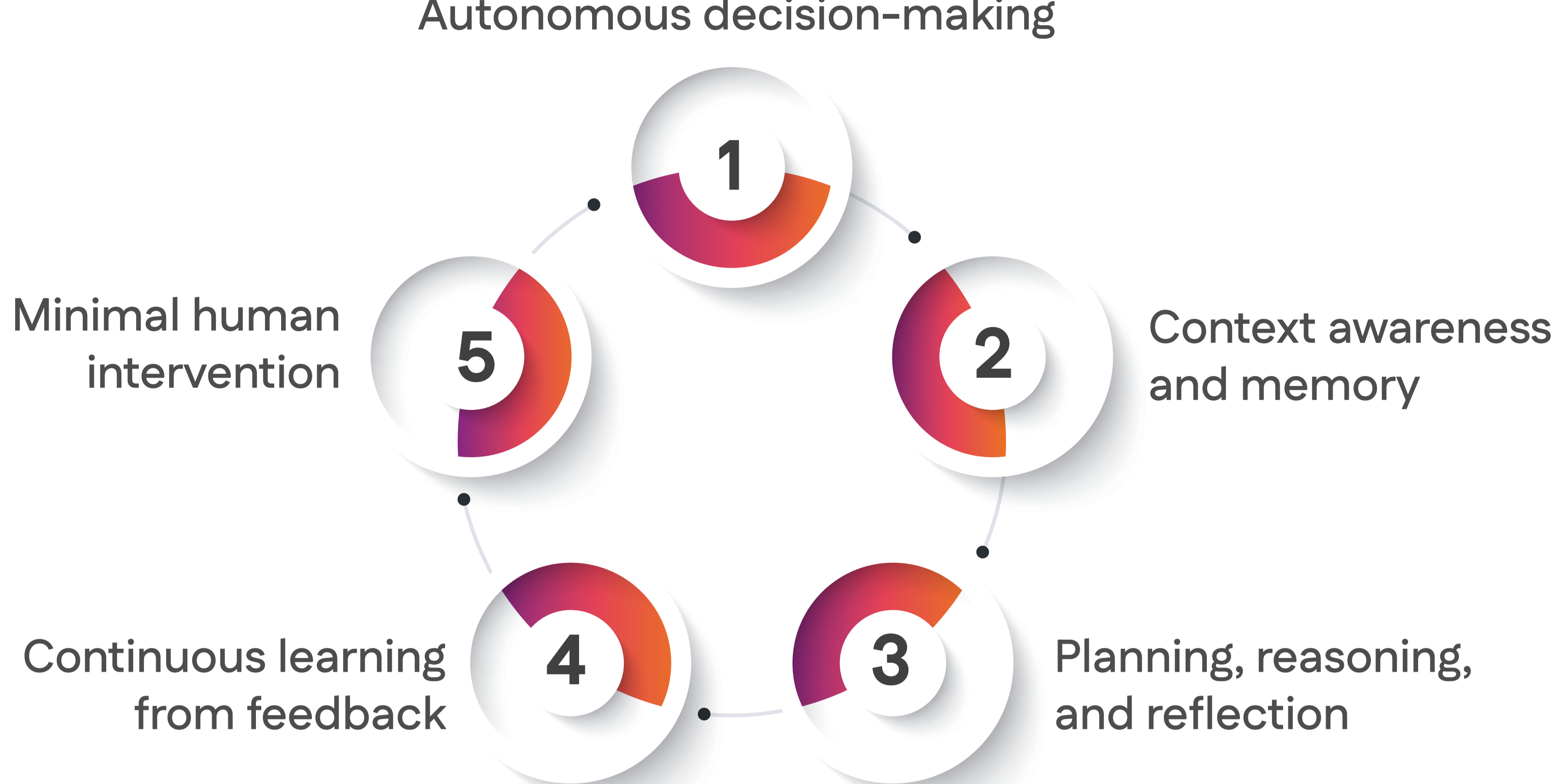


Agentic artificial intelligence enables systems to think, decide, and act independently. Unlike traditional automation, agentic AI systems pursue goals, adapt in real time, and collaborate across enterprise environments. As enterprises scale autonomy in 2026 and beyond, AI agent architecture becomes the foundation for intelligent, mission-critical systems. Enterprises adopting agentic AI report faster decisions, lower operational effort, and higher system resilience. The global agentic AI market is valued at \$7.29 billion in 2025 and is projected to reach \$139.19 billion by 2034, growing at a 40.5% CAGR, signaling strong enterprise confidence.

## What Is Agentic AI?

Agentic AI refers to goal-driven AI systems that operate autonomously over time.

### Key Characteristics

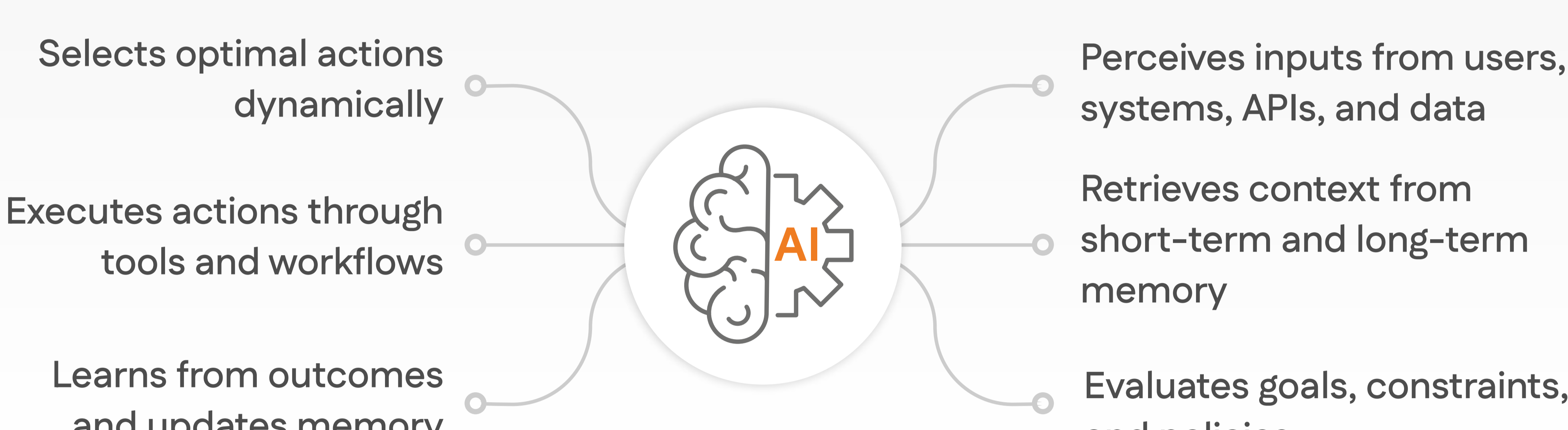


**Agentic AI doesn't just respond. It acts with intent.**

## How Agentic AI Works (High-Level Control Loop)

Agentic AI operates through a continuous perception–decision–action loop.

### Core Flow



This closed loop allows agents to function in dynamic, uncertain environments.

## Core Architecture of Autonomous AI Agents

### Key Architectural Layers

**User Interface Layer** - Enables human and system interaction through web UIs, API clients, and mobile applications

**API Gateway & Security Layer** - Handles authentication, authorization, rate limiting, and request routing

**Orchestration Layer** - Manages workflows, task scheduling, state tracking, and execution monitoring

**Agent Layer** - Hosts specialized agents such as executor, reviewer, and tool agents for reasoning and task coordination

**Tool & Memory Layer** - Provides access to vector stores, knowledge bases, APIs, and tool execution capabilities

**Infrastructure Layer** - Supports LLM services, databases, message queues, and system monitoring

Most enterprise deployments rely on multi-agent architectures, where specialized agents collaborate under centralized orchestration to handle complex, long-running tasks efficiently.

## Step-by-Step AI Agent Architecture



## Single-Agent vs Multi-Agent Systems

Aspect	Single-Agent	Multi-Agent
» Focus	» One task or domain	» Specialized agents collaborate
» Scalability	» Limited	» Highly scalable
» Resilience	» Single point of failure	» Fault-tolerant
» Coordination	» Not required	» Delegation and negotiation
» Enterprise readiness	» Low	» High

Most enterprise autonomous agents use multi-agent designs.

## Agentic AI vs Traditional Automation

Aspect	Traditional Automation	Agentic AI
» Decision-making	» Rule-based	» Goal-driven reasoning
» Adaptability	» Low	» High
» Memory	» None	» Contextual + long-term
» Learning	» Static	» Continuous
» Handling uncertainty	» Poor	» Designed for ambiguity

Agentic AI enables autonomous problem-solving, not just task execution

## Enterprise Use Cases of Agentic AI



Agentic systems manage complex, high-volume workflows with speed and accuracy.

## Benefits of Agentic AI for Enterprises



- » Faster real-time decision-making
- » Reduced human intervention
- » Scalable operations across departments
- » Better cross-system coordination
- » Continuous learning and optimization

Over time, agentic AI becomes a strategic digital workforce.