

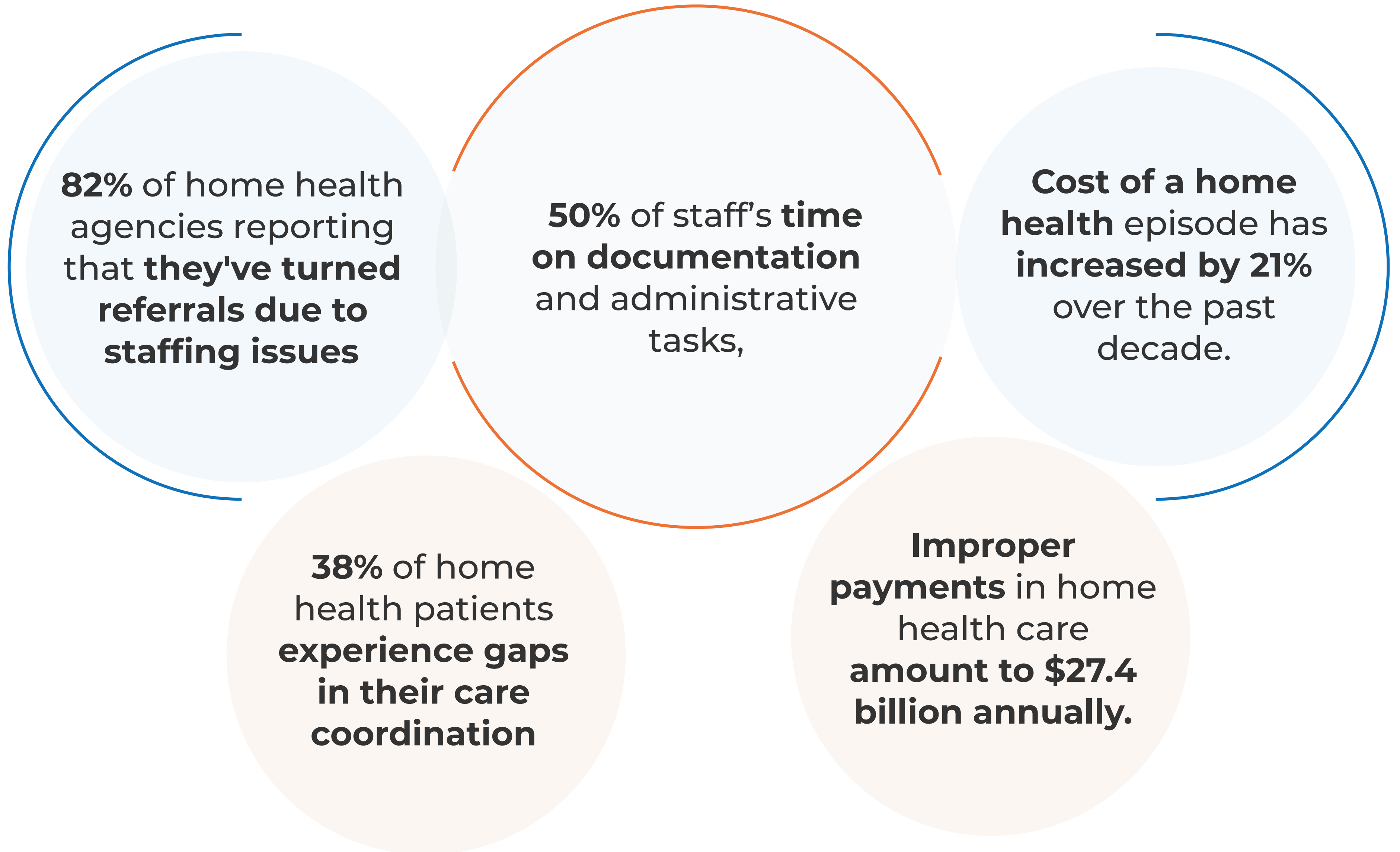
AI in Home Health - Redefining Patient Care



With an aging population and the rising prevalence of chronic diseases, the demand for home health services is growing rapidly. As per the U.S. Census Bureau predicts that by 2034, adults over the age of 65 will outnumber children under 18. Moreover, a survey by AARP reveals that **77% of adults over 50 wish to remain in their homes as they age.**

The global home health market is projected to reach \$634.9 billion by 2030

Current State of Hospice without AI



AI in Home Health is expected to increase by 25% in the coming years.

Application of AI in Home Health



Fraud Detection

AI enabled verification

1. Identifies fraud like false claims or duplicate billing
2. Automates audits, speeding up fraud detection
3. Flags high-risk areas for potential fraud.

Staffing

AI in home health staffing

1. Match caregiver skills with client needs to recommend the best caregiver
2. Helps resolving scheduling conflicts efficiently
3. Allows flexible adjustments to maintain continuity of care.

Referral Intake

Automated referral system

1. Extract referral details from various sources.
2. Validates the data for accuracy
3. Matches clients with caregivers based on skills and availability.
4. Store data in EMR and create episode

Electronic Visit Verification

EVV automation in home health

1. Identifies missing shift details in the EVV platform
2. Tracks missing clock-in/clock-out times and services provided.
3. Contacts the caregiver through multiple channels.
4. Update EVV system automatically

Health Monitoring

AI in home health

1. Remotely tracks patients' vital signs based on client input.
2. Alert home health agency before it become critical
3. Offer more value-driven services to their clients.

Care Plan

AI in home health

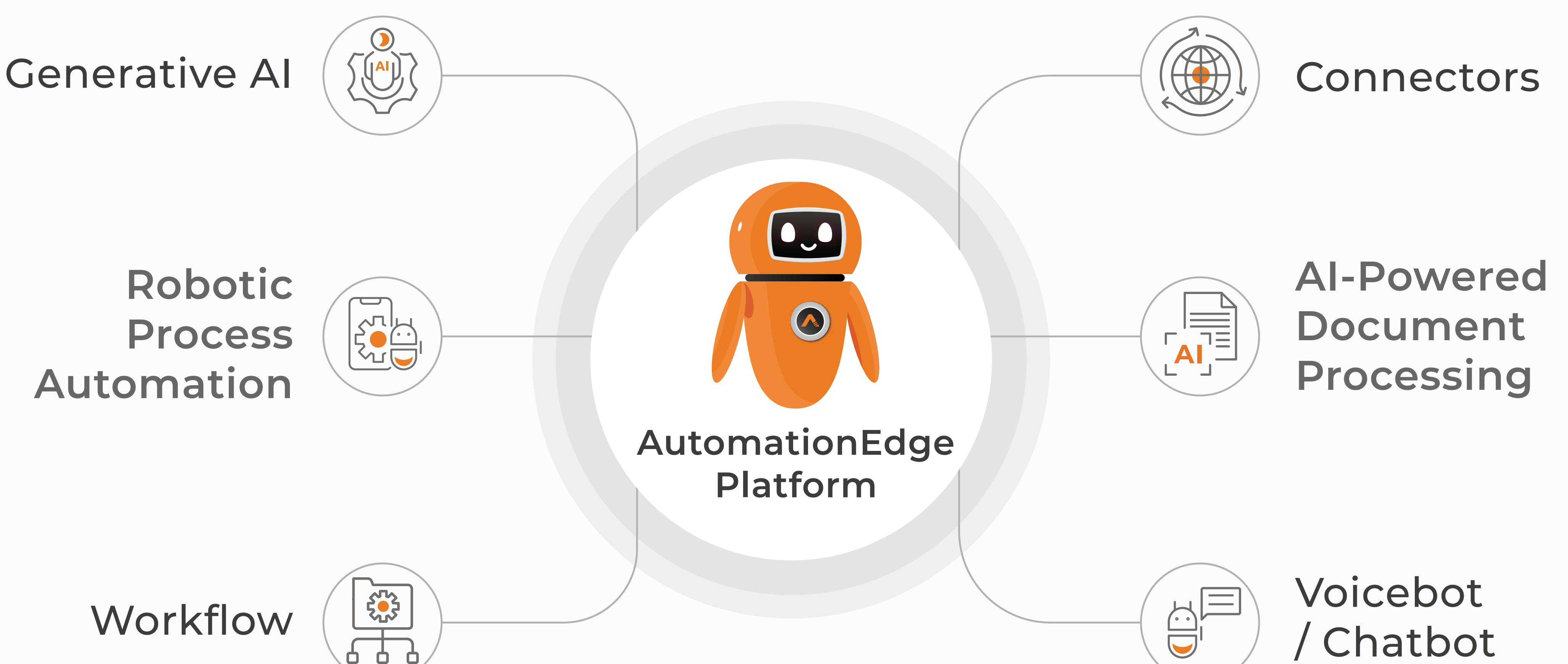
1. Analyze patient data to suggest personalized care plans.
2. Reduce 19% of hospital readmission rate
3. Predict potential complications based on health trends.

Prior Authorization

Automated prior authorization system

1. Extract medical details and relevant clinical documentation
2. Analyzes and interprets complex payer policies, & clinical guidelines
3. Evaluates prior authorization request to approve/deny

AutomationEdge Technologies for Hospice Care



[Request A Demo →](#)