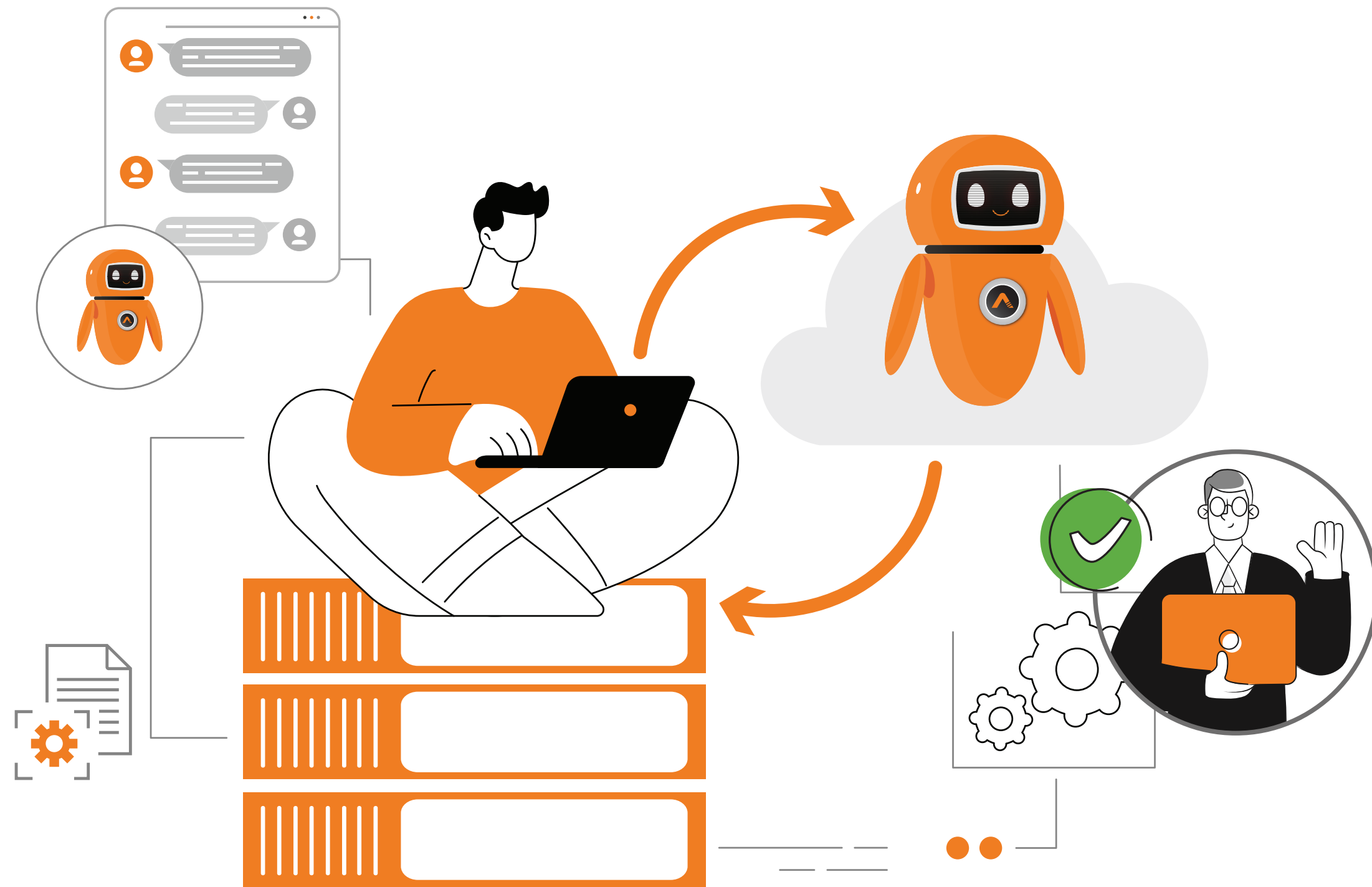
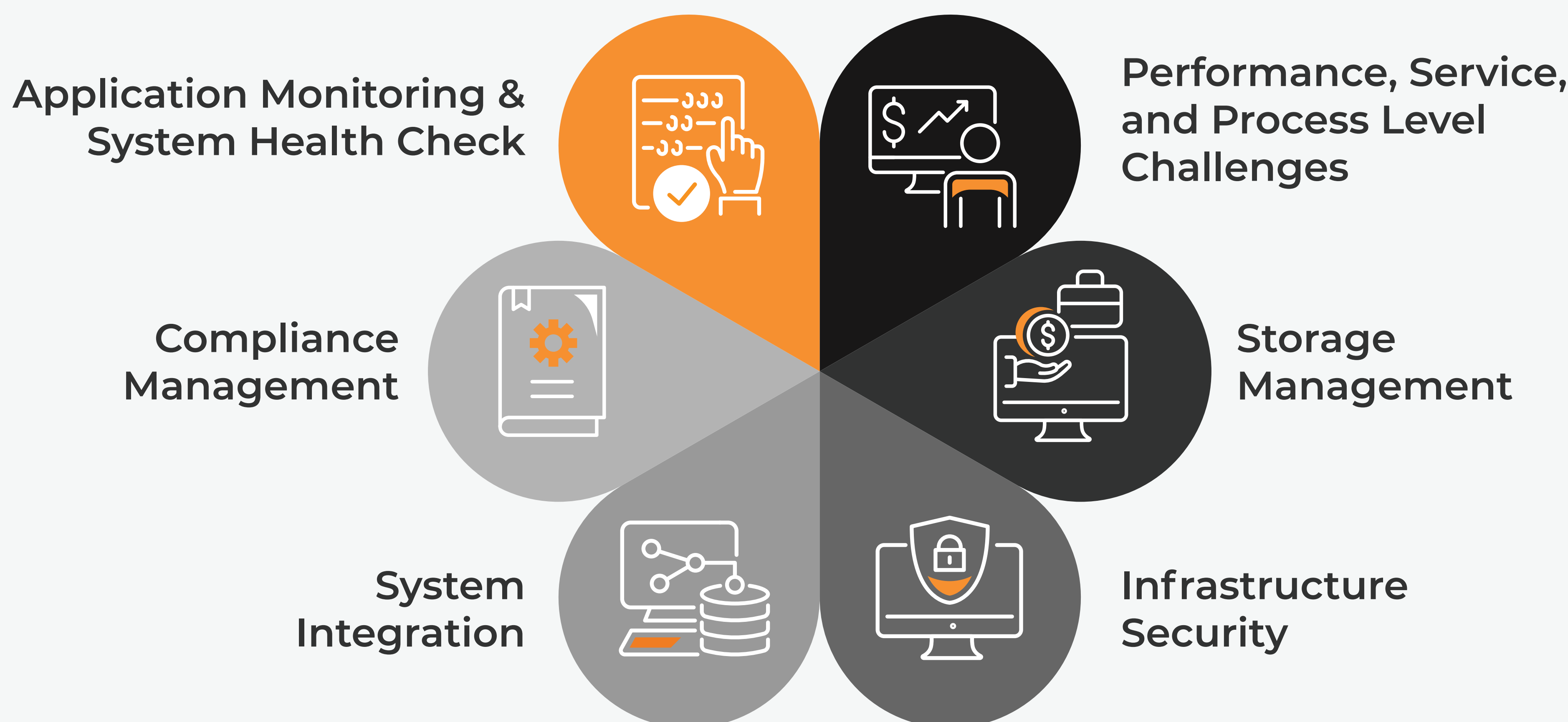


IT Infrastructure Automation



IT infrastructure management refers to the processes, tools, and practices involved in overseeing and maintaining the foundational components of an organization's information technology (IT) environment. These components typically include hardware, software, networking equipment, data centers, and other resources necessary for the functioning of IT systems and services.

Challenges with IT Infrastructure Management



Burnout Characterized by Multiple Factors

- According to a report, server is the largest part of the cost of the data center, accounting for about **60%-70% of the hardware cost.**
- Within the past two years, 49% of respondents had faced a **data breach**, marking a notable increase from the previous year's 39%
- As per Cost of a Data Breach Report, the average total **cost of a data breach** reached \$4.35 million in 2022.
- According to a report, **95%** of **network changes** are performed manually, resulting in **operational costs** 2 to 3 times higher than the cost of the network.

Gartner Predicts 70% of Organizations to Implement Infrastructure Automation by 2025

Automation Opportunities in IT Infrastructure Management

Server Automation

Enable provisioning, configuration, and management of servers using automation and AI and ensure consistency and reducing deployment times.

Network Device Management

Monitor, configure, optimize, and perform troubleshooting of network infrastructure components such as routers, switches, firewalls, and load balancers with automation and AI tools.

Event Monitoring

Utilize machine learning algorithms to analyze system logs and detect anomalies or potential issues in real-time, enabling proactive troubleshooting and incident response.

Security Management

Enhances security posture by automating routine security tasks such as vulnerability scanning, patch management, and security policy enforcement.

Enterprise Application Management

Simplifies the deployment, configuration, and maintenance of enterprise applications, ensuring consistency and reliability across diverse environments.

Benefits of IT Infrastructure Management Automation



Why Choose AutomationEdge?

- 24/7 Monitoring
- Human-in-Loop for Ticket Resolution
- 500+ Ready Connectors
- Self-Service Assistance
- IT Alerting for Ticket Assignment
- Generative AI and ChatGPT Capabilities

[Request A Demo](#)

www.automationedge.com