



Is Your Enterprise Ready for Agentic AI



What Is Agentic AI?

Agentic AI refers to intelligent AI agents that can analyze information, make decisions, and execute tasks autonomously across enterprise systems. Unlike traditional automation that relies on fixed rules and predefined workflows, agentic AI systems can understand context, plan actions, and adapt to changing business conditions. These AI agents can also coordinate with multiple applications, trigger workflows, and continuously improve outcomes using data insights.

Examples of Agentic AI in Enterprises

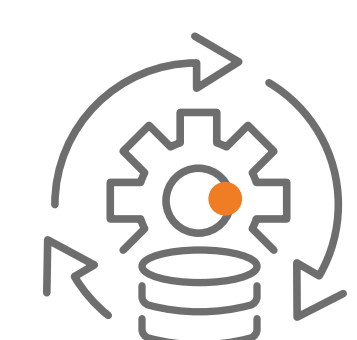
- **IT Operations:** AI agents automatically detect system issues and trigger resolution workflows without manual intervention.
- **Finance & Risk Management:** AI agents analyze financial transactions to detect anomalies or fraud in real time.
- **Customer Service:** AI agents handle customer requests, route queries, and resolve common issues autonomously.
- **Document Processing:** AI agents extract information from invoices, contracts, and forms and trigger downstream workflows.

Why Agentic AI Matters for Enterprises



- » Automates complex workflows beyond rule-based automation
- » Improves decision-making using real-time data analysis
- » Reduces dependency on manual approvals and interventions
- » Enables scalable automation across multiple enterprise systems

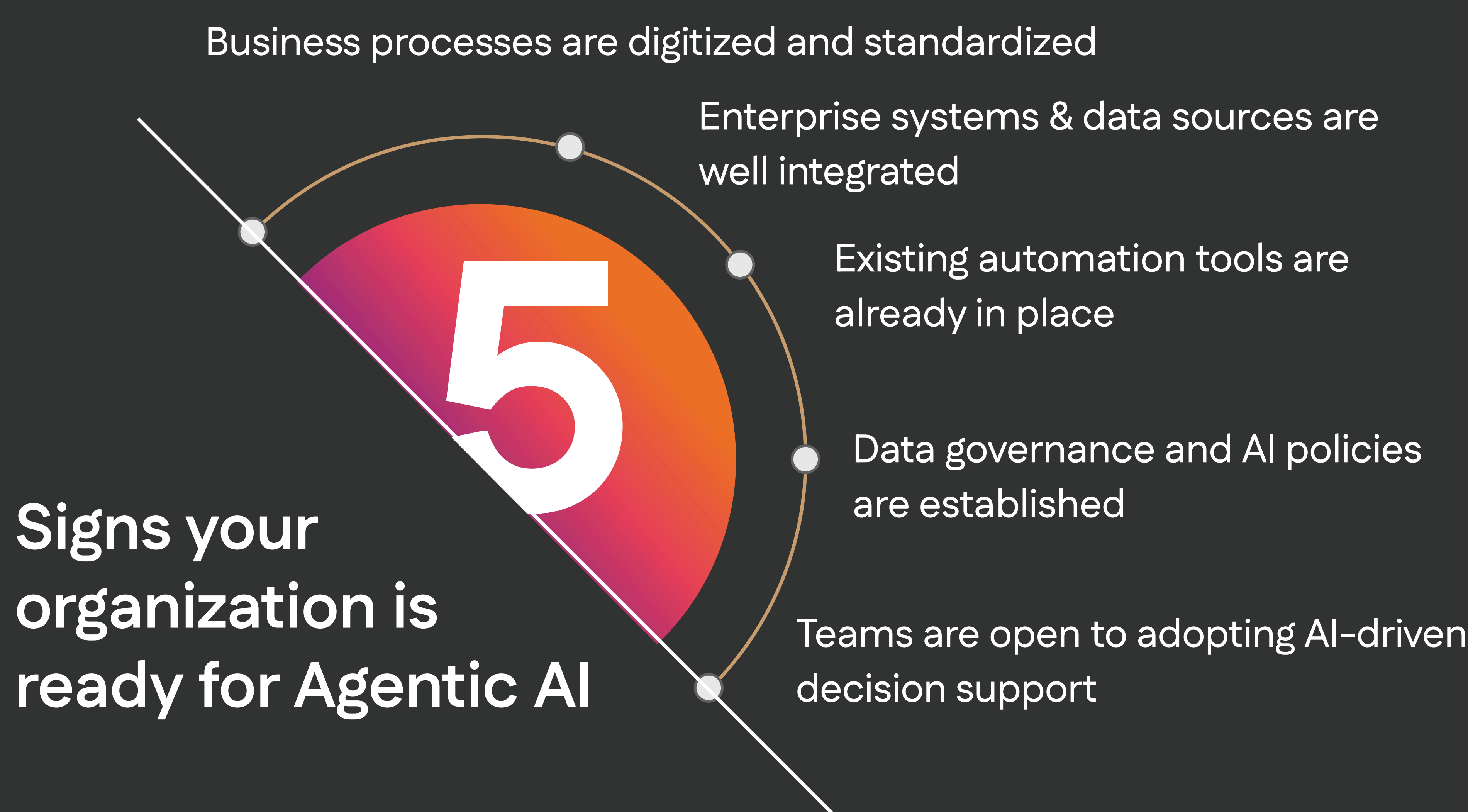
Key Capabilities of Agentic AI



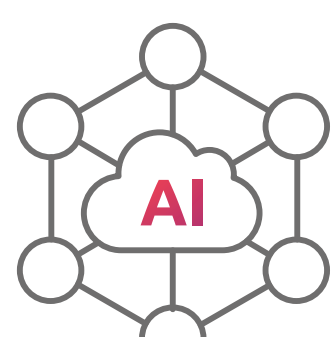
- » Autonomous decision-making based on data insights
- » Multi-system orchestration across enterprise applications
- » Self-learning AI models that improve with usage
- » Intelligent workflow execution without manual intervention

When Is Your Organization Ready for Agentic AI?

Enterprises can successfully adopt Agentic AI when their processes, data, and systems are ready to support intelligent automation. Organizations that already have digital workflows, integrated systems, and a clear automation strategy are better positioned to deploy AI agents and scale autonomous operations.

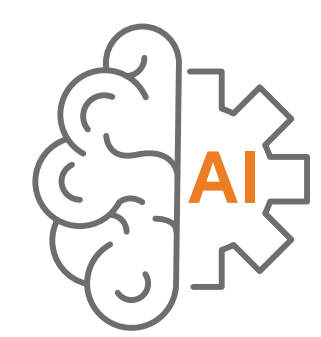


Enterprise Use Cases for Agentic AI



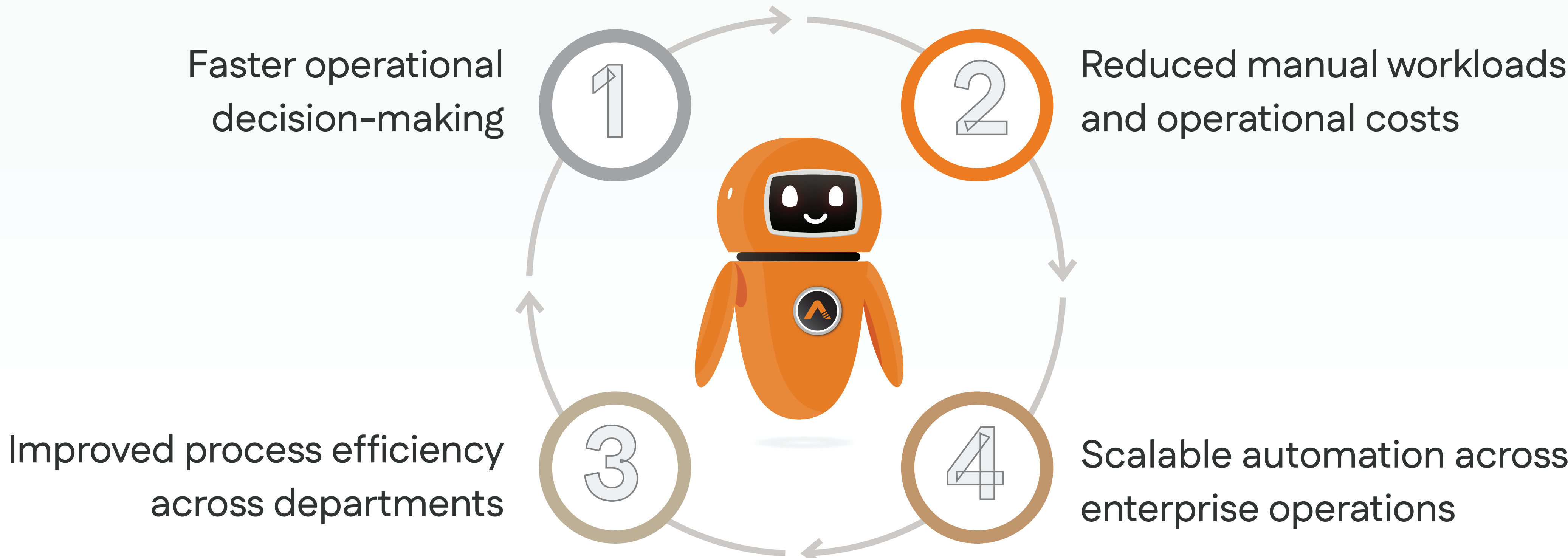
- » Intelligent IT operations and automated incident resolution
- » Financial risk analysis and fraud detection
- » Automated document processing and compliance monitoring
- » Customer service automation with AI-driven agents

Technologies Powering Agentic AI



- » Large Language Models (LLMs) for reasoning and decision-making
- » AI agents and orchestration frameworks
- » Automation platforms and workflow engines
- » Enterprise data integration and APIs

Business Impact of Agentic AI



How Enterprises Can Start Their Agentic AI Journey

- » Identify high-impact workflows for AI automation
- » Integrate AI agents with enterprise systems and APIs
- » Establish AI governance and monitoring frameworks
- » Use automation platforms to orchestrate AI-driven workflows

