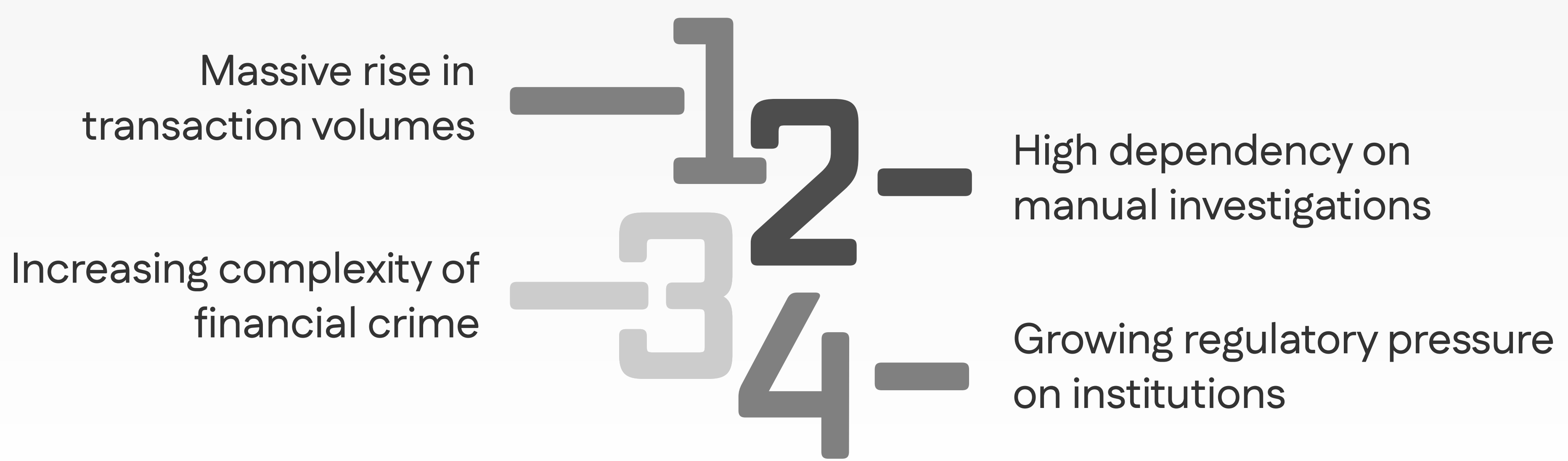


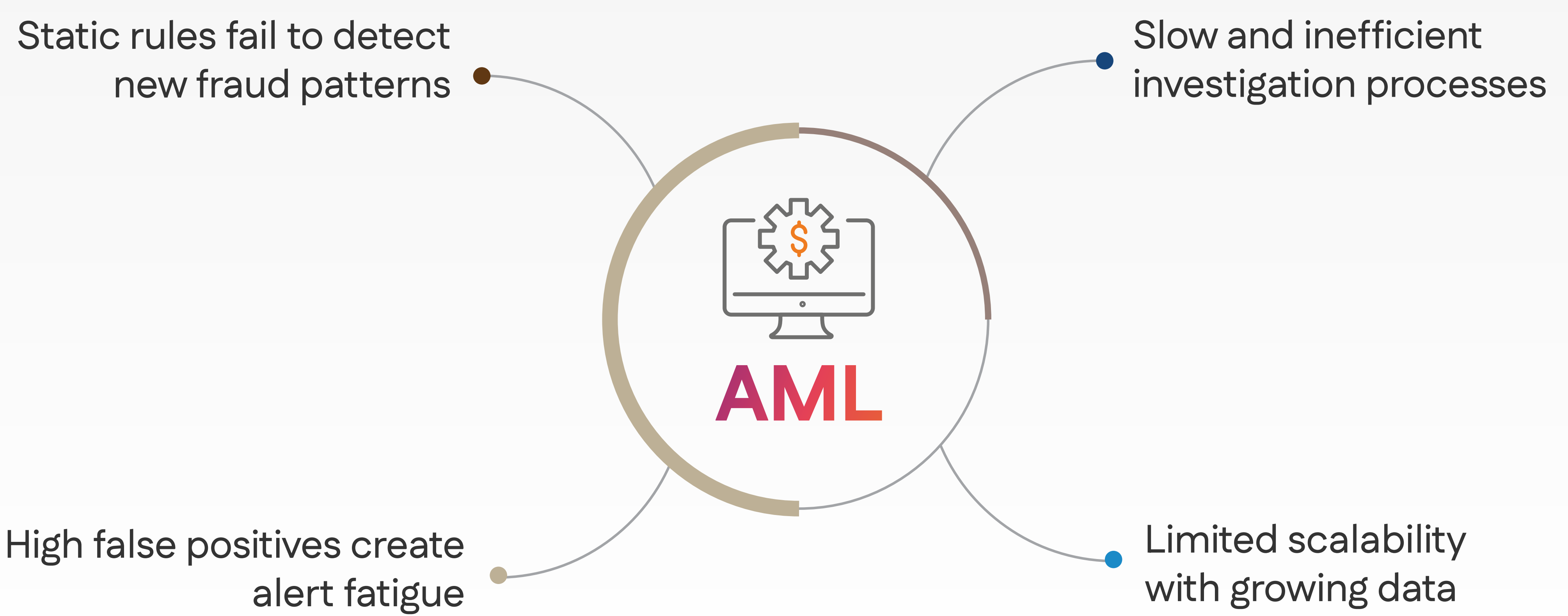
The Evolution of AML From Rules to Autonomous Intelligence

Financial crime is evolving rapidly, and traditional AML systems are struggling to keep up. As transaction volumes grow and fraud becomes more sophisticated, organizations need smarter, faster, and more scalable solutions. This infographic highlights the journey from rule-based AML to AI-driven detection and the rise of Agentic AI in building autonomous, future-ready compliance systems. Financial institutions today handle millions of transactions daily, making manual monitoring inefficient and error prone. Legacy systems often fail to detect complex, cross-channel fraud patterns in real time. Global AML systems spending reaches \$33.9 billion in 2025, projected to hit \$75.2 billion by 2030 a 121% growth.

The AML Challenge Today



Limitations of Traditional AML

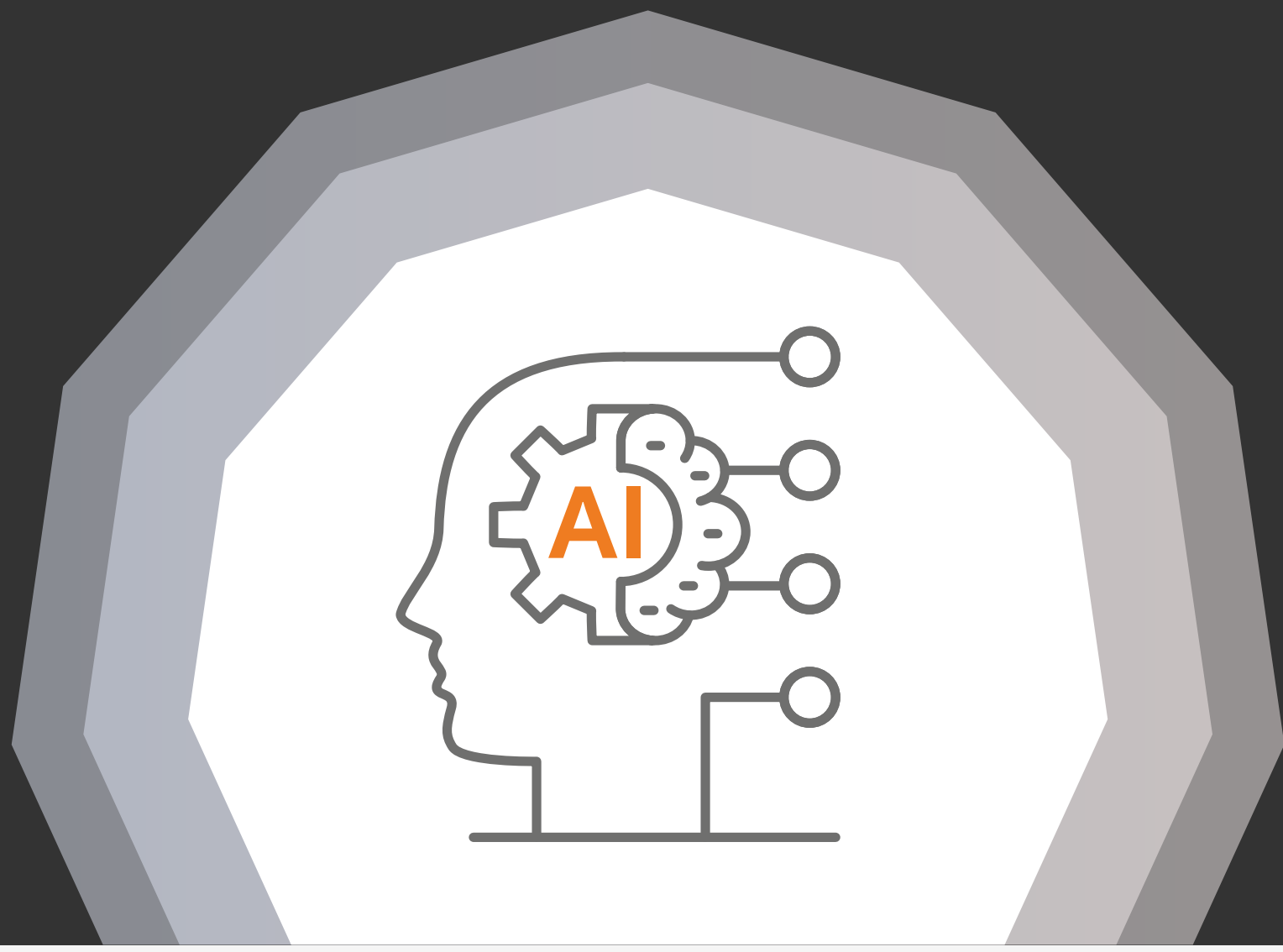


How AI is Transforming AML



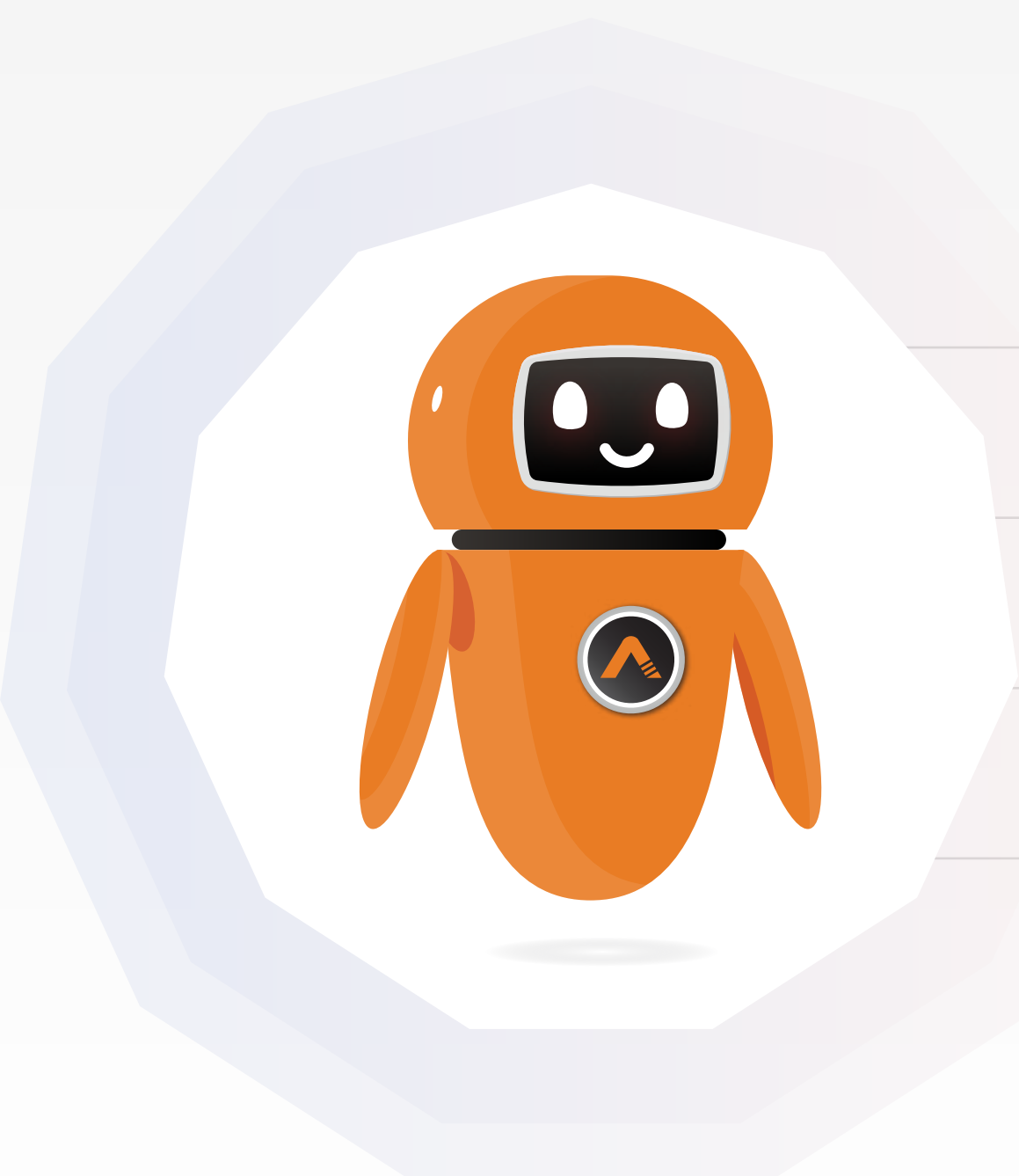
The Rise of Agentic AI

- » Autonomous decision-making systems
- » Continuous learning and adaptation
- » End-to-end workflow automation
- » Minimal human supervision required



Business Impact & Future

- » Improved detection accuracy
- » Faster compliance and reporting
- » Lower operational costs
- » Scalable and future-ready AML systems



[DOWNLOAD THE INFOGRAPHIC](#)