

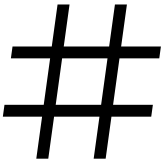


RELEASE NOTES: AE VERSION 5.6.1

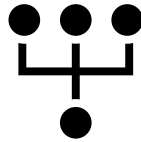
- [AT A GLANCE](#)
- [WHAT'S NEW](#)
- [FIXED ISSUES](#)
- [SECURITY ENHANCEMENTS](#)
- [KNOWN ISSUES](#)
- [CONTACT DETAILS](#)



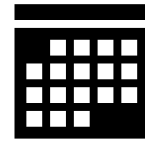
Release Specifications



Version: 5.6.1



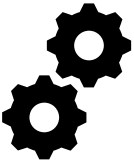
Type: Patch



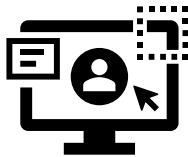
Date: 08/09/2020



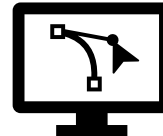
Release Artifacts



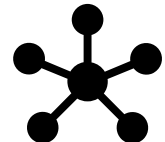
AE Engine
WAR



AEUI
WAR



Process Studio*
Zip



Integration
WAR & JAR(s)

*AutomationEdge Server V5.6.1 is compatible with Process Studio V5.6.0



Browsers Supported for AEUI



57 & above



80 & above



11



52 & above



What's New?!



For better understanding a feature, [*GUIDE NAME* | *PAGE NUMBER*] of the current version of guide has been provided after the points (wherever applicable) for the reader to refer to.

Release Notes for Version 5.6.0 are available [here](#).

- AutomationEdge Server (Engine & UI):
 - Added support for ADFS based authentication via SSO
 - For more flexible integration with the SSO provider, we have made some changes in the way you configure AutomationEdge SSO [**User Guide | 14,49,534**]
 - Optimized loading time for pages with paginated content



Fixed Issues

- User associated reports and dashboards now get deleted along with deletion of the user hence addressing the issue of dashboard error
- Logging out from AutomationEdge while authenticated via SSO now logs out the user from IDP also



Security Enhancements

- Advisory: We recommend upgrading Tomcat 9 to the latest version (or not older than 9.0.35) as security vulnerabilities have been identified in versions 9.0.31 and 9.0.32



Known Issues / Limitations

- The Status of Integration Services is displayed as UNKNOWN intermittently (for few seconds), on AutomationEdge UI, although the Service may be running.
- The *Time Zone* option under the *Polling Schedule* section of Integration > Type Configuration menu is disabled. The default time zone of the machine on which integration service is deployed will be used for Polling schedule
- A redundant update status message is displayed for all existing plugins in PS after the *Plugin Sync* operation if any plugin is assigned to or removed from a tenant.
- Copy Query option in Add/Edit Templates in Reports tab on AEUI does not work for IE browser.
- No email notification is sent when a workflow configuration parameter is removed; even after configuring '*Workflow Create and Update*' notification in Settings menu in AEUI
- An incorrect the email notification – 'Parameter is added' instead of 'Parameter is changed' – is sent when the value of a configuration parameter is changed
- While Downloading Requests from AEUI, Created and Completed dates need to be formatted as 'Date' in Microsoft Excel in the downloaded CSV file
- WebGUI workflows must always be marked as sequential. If one of the WebGUI automation workflows running as non-sequential workflow is terminated, then all the subsequent requests remain in *New* state.
- Agents will acquire Tenant level proxy settings (If Any) during upgrades discarding the Agent level proxy settings. The required changes need to be done manually
- Agent restart features in not supported on Linux based OS
- Agent type cannot be changed when the Agent is in *Unknown* state
- Existing workflows will not open if Process Studio Distribution folder path has any special characters.
- SSO authentication is not supported for users with *Sysadmin* role or users who want to use the Process Studio
- Process Studio is not fully supported in Mac i.e. Plugin Sync feature is not supported on Mac.
- Any type of UI Automation (Web/Desktop/Surface) is not supported in Linux based OS



Contact Details

AutomationEdge Technologies Inc



General: info@automationedge.com

Support: support@automationedge.com

Trainings: training.support@automationedge.com



Website: <https://automationedge.com>



India: +91-20-6632-1000

USA: +1-281-220-1057